

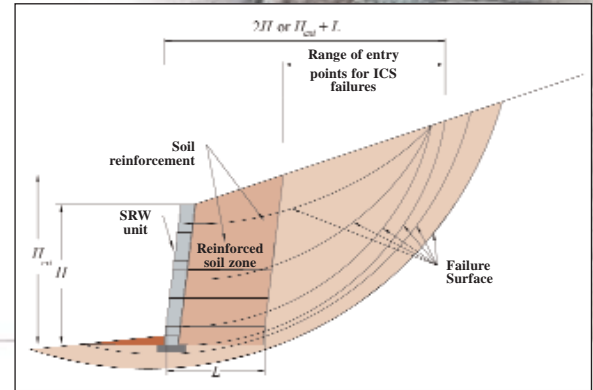
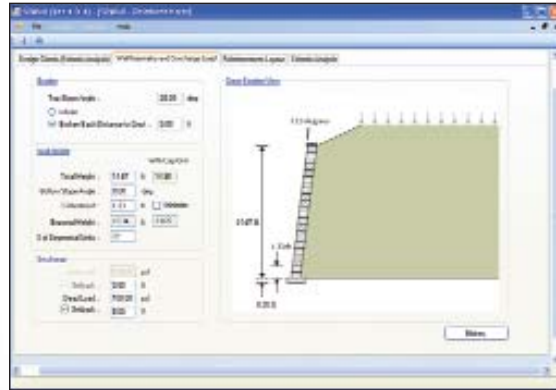
# PCMA MASONRY *tip*

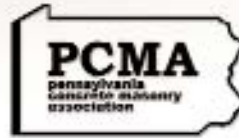
## NEW INTERNAL COMPOUND STABILITY (ICS) ANALYSIS FOR SEGMENTAL RETAINING WALL

✦ Introduced in the NCMA Design Manual for Segmental Retaining Walls (SRW), 3rd edition, ICS evaluates, through slope stability methods, potential compound slip circles that originate behind the soil-reinforced SRW and exit at the face. The analysis is a special case of the global stability and does not replace it.

This 3rd Edition Design Manual has also incorporated the recommendations of Seismic and Drainage Manuals and includes new sections on tall walls and the recommended roles and responsibilities on an SRW project.

The related software, SRWall 4.0 is packed with new tools and capabilities to increase design productivity and incorporates the new methodology published in the Manual.





PO Box 4  
Lebanon, PA 17042  
717-279-6346  
Executive Director, Jan Boyer  
jboyer@pacma.com



## NEW Internal Compound Stability (ICS) Analysis for Segmental Retaining Wall

Do you know how to analyze compound stability failures  
on SRWs?

---

Technical information regarding concrete masonry is available through  
the National Concrete Masonry Association (NCMA). You can access  
this information any time through the NCMA website [www.ncma.org](http://www.ncma.org).

The PCMA website [www.pacma.com](http://www.pacma.com) features a listing of producer  
members located in Pennsylvania and their contact information along  
with the products each produces. You'll also find information on  
education opportunities, local publications and more.

Diverse Sustainable Solutions

[www.pacma.com](http://www.pacma.com)

PCMA

