

PCMA
pennsylvania
concrete masonry
association

INDUSTRY NEWS

ANNUAL PCMA FAMILY CONVENTION HIGHLIGHTS

Seven Springs has always been a good location for the Annual Family Convention and this year was no exception. Members came to enjoy fun and fellowship with family and friends from PCMA. There were many outdoor activities and the weather co-operated to provide a great weekend for all.

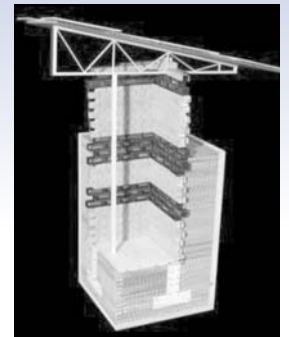
We thank the presenters of the Educational Programs who took time out of their busy schedules to provide important information to the attendees:

- **Joe Schmadel**, *President of Sun Precast Company* for his session on Lean Manufacturing showing us how what may seem a small thing can affect the work flow and in turn plant profitability.

- **Bob Thomas**, *President of the National Concrete Masonry Association*, addressed initiatives underway at NCMA that are helping the industry in the areas of marketing, research, testing, legislative issues and more.
- **Jason Thompson**, *President of the Masonry Alliance for Codes and Standards and Vice President of Engineering at NCMA*, gave attendees a snapshot of how MACS works to advocate for the masonry industry at the International Code Council hearings for Code changes that they make but also those made by others that may affect our industry.

continued on page 3...

PENN STATE ARCHITECTURAL STUDENT DESIGN COMPETITION



The extremely successful and joyful jury day was held on Friday, April 24, 2009 at Penn State University! A total of 43 entries were judged by **Logan Myers**, NCMA/PCMA Representative, Middleburg • **Alan Chack**, AIA, Mifflintown • **Travis Crum**, Architect, Philadelphia • **Loukas Kalisperis**, Professor of Architecture, Penn State • **David McIlnay**, Architect AIA, LEED AP, Harrisburg.

The winners are:

- 1st place **Colleen McDonough** ~ Project shown above
- 2nd place **Lynne Daniels**
- 3rd place **Elijah Dolly**

The jury gave four Honorable Mentions to: **George Gard**, **Caitlin Roe**, **Chad Garrety** and **Amanda Montemore**.

IN THIS ISSUE...

FYI	2	Annual PCMA Golf Outing ...	7
Annual PCMA Convention....	3	4th Annual Masonry Instructors Workshop	8
ToolBag Award Winners.....	4	Code Books.....	9
Silent Auction Donations	5	Promotions	9
Hospitality Suite Donations ...	5	NOCTI Cut Score Project	10
Welcome New Members	5	PAFSCAC Update.....	10
What MACS Has Done for Us. 6		2009 Skills USA	11
Extreme Home Makeover.....	6		

The competition was sponsored by the NCMA Education and Research Foundation and the students will have an opportunity to present their projects to NCMA at the Mid Year Meeting. A detailed report of the project, which included a trip to Penn College of Technology for a "Hands On" day with the masonry students, is available at the PCMA office.

Ute Poerschke, Ph.D. Associate Professor of Architecture, oversaw the project and is very thankful for the generous support which has given the students an extremely valuable and enduring experience.

PRESIDENT'S MESSAGE

PHIL DEVECCHIS



Dear Valued PCMA Members:

As we are all aware, the global economy has created a challenging business environment to say the least. While there are certainly positive opportunities for us with the Federal Government's Stimulus Package, with the lack of "shovel ready" projects and a slow approval process, these recovery programs will take some time to bear fruit.

PCMA has continued in these turbulent times to promote concrete masonry and our industry. This has only been possible because of our members' continued support. We are pleased to have maintained our membership and have added a new Associate Member. Our Convention was well attended and the committee meetings have good participation as well. We appreciate your support of PCMA and the concrete masonry industry. While other sources of revenue are quickly eroding (again due to the economy) your continued support is more important than ever.

We will survive this economic downturn and hopefully be even stronger than we were before.

Sincerely,
Phil DeVecchis, Jr.

FYI

- **Dave Kline**, *Beavertown Block Company*, is the new Chair of the Residential Basement Committee. **Ken Mauzy**, *Eastern Industries*, is the new Chair of the Workforce Development Committee
- PCMA is co-sponsoring with the *Delaware Valley Masonry Institute* presentations by **Dr. Hamid & Charles Fertaw** with architectural firms in the Philadelphia area on the topic of Effective Construction of Masonry Buildings.
- *Masonrysystems.org* is a new website created by consensus of the masonry industry that gives designers a terrific location for technical information, design ideas and more. We encourage you to visit the site.
- *Harrisburg Area Community College* is starting a new post secondary masonry program in August 2010. The instructor chosen to start this program is **Scott Leisenring**.
- The PA Association of Career & Tech Administrators Symposium was held February 11 & 12 at the Hershey Lodge and Convention Center. **Ken Mauzy and Jim Preskenis** volunteered their time at the booth representing PCMA at this event.
- Related masonry suppliers such as brick, glass block, cast stone and related material suppliers and landscape product and brick distributors can now join PCMA as Associate Members.
- The Hardscape Committee will hold an NCMA SRW Installer Training Seminar on November 5 in State College. **Jon Calle**, *Strata Systems* has agreed to donate his services again to do the presentation and **Burke Steenhoff**, *Pennoni* will sponsor the food. We are looking for 40 attendees and are hoping that producers will send their landscape contractors.
- **Doug Statler**, *York Building Products*, and **Karla Tosten**, *Nitterhouse Masonry Products*, made presentations of the PCMA Segmental Retaining Wall and Paver topics on February 10 at Penn College of Technology for Horticulture Students.
- Through PCMA efforts, masonry has *remained on the High Priority Occupations List* until at least July 2010. This is good news for the masonry education programs and our industry!
- **Jim Dowd**, *Rinox Pavers*, represented PCMA and made a presentation of the PCMA SRW Seminar to the Code Officials at the Centre Region COG in State College in May.

2009 BOARD OF DIRECTORS

Phil DeVecchis, President
Beavertown Block Co., Inc.

Dan Longenderfer, Vice President
New Holland Concrete

Barry Diller, Secretary
Nitterhouse Masonry Products, LLC

Dominic Jampo, Treasurer
Trenwyth Industries

Glenn Karker, Board Chairman
York Building Products Co., Inc.

Jim Dowd
Rinox Pavers

Michael Iannelli
Fizzano Bros. Concrete Products, Inc.

Tom Long
Essroc Cement Corporation

Ken Mauzy
Eastern Industries

Paul Pepe
Keystone Cement Company

Jim Preskenis
SIKA corporation

Travis Seymore
Seymore Bros., Inc.

Bob Young
Acme-Hardesty Company, Inc.

INDUSTRY NEWS IS PUBLISHED BY THE PENNSYLVANIA CONCRETE MASONRY ASSOCIATION FOR THE PURPOSE OF INFORMING MEMBERS AND OTHERS ABOUT ISSUES OF CONCERN TO THE CONCRETE MASONRY INDUSTRY. IF YOU HAVE INFORMATION TO INCLUDE IN THIS PUBLICATION OR ANY COMMENTS, CONTACT THE EXECUTIVE DIRECTOR AT 717-279-6346.

ANNUAL PCMA FAMILY CONVENTION HIGHLIGHTS



At the Barbeque Dinner on Friday night we continued the tradition of giving gifts to all of the children and shared time greeting old friends and meeting members attending for the first time. The hospitality suite after dinner is always a great time for everyone and this was the first chance we all had to see the great line up of Silent Auction items up for bid.

The winners of the golf outing were:

First Place Team

*Barry Diller
Bob Thomas
Dick Bish
Eric Church*

Second Place Team

*Tom Soares
John McDonald
John Bongiovanni*

Closest to the Pins

*Glenn Karker
Joe Schmadel*

Longest Drive

Tom Soares

During the reception hour from 6 - 7PM, members and guests had a chance to make their last minute bids on the Silent Auction items. Promptly at 7PM the bidding was ended and dinner began.

The Convention could not have been successful without the help of the following Convention Committee members: *Chairman, Paul Pepe, Keystone Cement Company*, for his assistance in all of the planning and for organizing the golf outing; *Mike Iannelli, Sr., Fizzano Bros. Concrete Products*, for being a great MC for the Education programs, *Ken Mauzy, Eastern Industries*, for assistance at registration and with Silent Auction set up, *Dominic Jampo, Trenwyth Industries*, for helping to stock the hospitality suite and of course *President Phil DeVecchis, Beavertown Block*, who helped in many aspects throughout the weekend. Many thanks to these members and to all of the families who attended.

The 2010 Family Convention is scheduled for June 18 - 20 at the Woodloch Resort. *We look forward to seeing you there!*



TOOL BAG AWARDS TO VOTECH SCHOOLS

The Workforce Development Committee under the leadership of **Ken Mauzy, Eastern Industries**, arranged for tool bags, filled with tools of the masonry trade, to be distributed to the top masonry students at the secondary and post secondary levels across the State. Other members of the committee who contact the schools are: **Kurt Rosander, Cemex; Don Simmons, Buzzi Unicem; Eric Church, Lehigh Cement; Joe Berlucchi, Lafarge North America; Phil DeVecchis, Beavertown Block Company; and Doug Schaeffer, York Building Products.**



The following are the winning students. Congratulations to all!

<u>School</u>	<u>Winning Student</u>	<u>School</u>	<u>Winning Student</u>
Abington Heights High School	Kevin Yetkowskas	Indiana County Tech Center	Chris Henry
Admiral Peary AVTS	Cory Yeager	Lancaster Co. Career & Tech Center	Jeremiah Martin
Beaver Co. AVTS	Jimmy Casperson	Lawrence Co. Area Vocational Technical School	Phil Yost
Bedford Co. Technical Center	Zach Partner	Lebanon Co. Career & Technology Center	Tyler Sell
Berks Career and Tech Center	Jamie L. Hess	Lehigh Career & Technical Institute	Travis Mantz
Bethlehem AVTS	Aaron Baker	Mon Valley Career & Tech Center	Sam Vargo
Career Institute of Technology	James Frey	Monroe Career and Tech Institute	Allen Thomas
Center for the Arts & Technology Brandywine	Anthony Ciorrocco	Northern Tier Career Center	Kyle Bennett
Central Montco Technical High School	Justin Wood	Northern Westmoreland Career & Tech Center	Jay Anderson
Central PA Institute of Science & Technology	Kenny Foust	Parkway West AVTS	Dom Alteri
Central Westmoreland Career & Tech Center	Joshua Wolfe	Penn College of Technology	Matthew Romanowski
Clearfield County Career & Tech Center	Anthony Lash	Reading-Muhlenberg CTC	Christopher Revilla
CTC of Lackawanna County	Steven Galli	Schuylkill Technology Center-North Campus	Shawn Kimmel
Cumberland-Perry AVTS	Thomas Roberts	Somerset County Technology Center	Sam Popovich
Dauphin County Technical School	John Wolfgang	Sun Area Career and Tech Center	Brandon Lloyd
Delaware County AVTS-Aston	Ryan Lincke	Thaddeus Stevens College of Technology	Daniel Gabrielli
Fayette County AVTS	Robert Peton	The Williamson Free School of Mechanical Trades	Paul Capriolo
Franklin Co. Career & Technology Center	Michael S. Tomko	Upper Bucks AVTS	Allen Leister
Fulton County Area Vo-Tech School	David Metcalf	Warren Vocational Technical High School	Matt Moore
Greater Altoona Career & Tech Center	Ryan Fletcher	Western Area Career & Tech	David McNeel Jr.
Hazleton Area Career Center	Kalvin Wright	York County School of Technology	Steven Turner



Customer Service: 800/223-7054
Order Desk: 866/226-3834 x234
Phone: 610/892-1721
Cell: 215/237-5750
Fax: 610/892-1773

1787 Sentry Parkway West
 Suite 18-460 • Blue Bell, PA • 19422
 byoung@acme-hardesty.com
 www.acme-hardesty.com

Bob Young
 Masonry Specialist

Your Partner in Global Sourcing A Division of Jacob Stern & Sons, Inc.

CONCRETE PLANT EXPERTS





Designing, manufacturing and supporting the world's most innovative and reliable equipment for the concrete products industry since 1937.

Columbia

www.columbiemachine.com
 Your Local Sales Representative

Tim O'Meara/860-480-3894/timomeara@aol.com

DONATIONS

SILENT AUCTION

Due to the donations of a variety of items from our members and the bidding at the Auction, **WE RAISED \$3,145!!** This money will go toward our efforts to promote concrete masonry and Hardscape products as the material of choice for designers, builders and landscapers in Pennsylvania.

We would like to recognize the committee members who made this possible: *Chairman, Tom Long, ESSROC Cement Company, Dick Bish, JA Kohlhepp Sons; John Fizzano, Fizzano Bros. Concrete Products; Glenn Karker, York Building Products, Phil DeVecchis, Beavertown Block Company and Bob Young, Acme-Hardesty.*

We thank the following companies that donated items:

Acme Hardesty Company	Keystone Cement Company
Armstrong Cement Company	JA Kohlhepp Sons
Ashenfelter Associates	RI Lampus Company
BASF	Lanxess
The Bauer Company	Lehigh Cement
Beavertown Block Company	New Holland Concrete
Bon Tool Company	Nitterhouse Masonry Products
Daron Northeast	Pathfinder Systems
Phil DeVecchis	Rinox Pavers
Eastern Industries	Seymore Bros.
Essroc Cement Company	SIKA
Exact Match Masonry Staining	Souhegan Valley Engineering
Fallsway Equipment Company	Superior Clay
Federal White Cement	Swisher Concrete Products
Fizzano Bros. Concrete Products	York Building Products Company
Greensburg Block Company	York Lintel & Cast Stone Company
EP Henry	

CONVENTION HOSPITALITY SUITE

PCMA would like to recognize the generosity of the following members who contributed to the Hospitality Suite at the 2009 Convention.

The Bauer Company	Keystone Cement Company
Beavertown Block	RI Lampus Company
Bon Tool Company	Lehigh Cement Company
Buzzi Unicem USA	Mesa Tech
Daron Northeast	New Holland Concrete
EM United Welding	Nitterhouse Masonry Products
Fallsway Equipment Company	Rinox Pavers
Federal White Cement	Solomon Colors
Fizzano Bros. Concrete Products	Souhegan Valley Engineering
Graymont /Ashenfelter	Swisher Concrete Products
EP Henry	York Building Products
	York Lintel & Cast Stone

WELCOME TO OUR NEW ASSOCIATE PCMA MEMBER

We welcome the following new Associate Member who joined PCMA recently:

SOUHEGAN VALLEY ENGINEERING, INC.

Contact: Randall Bragdon

226 Desmond Street • Sayre, PA 18840

Phone: 570-888-4020 ; Fax: 570-888-4030

Website: www.svengineering.com

Email: rbragdon@svengineering.com

SVE has been designing segmental retaining walls since 1994, having designed over 5.8 million square feet of walls since then. We designed over 750,000 SF of walls in 2008 and would be glad to provide you with professionally-prepared, stamped wall design drawings. We have a staff of professional engineers (P.E.) licensed in the six states of New England, New York and in Pennsylvania. We do not subcontract our wall designs. We also provide site observation services as may be needed to satisfy local building code requirements.

Our wall designs are geared toward ease of reading and installation for the wall contractor because we understand that the wall installer is the key component to quality construction. A poor wall installation does not look good for anyone in our industry. Contact us at our Sayre office to discuss your design needs and our design fees (which are based on wall square footage).

LEHIGH
HEIDELBERGCEMENT Group

**Working together
to build our communities.®**

*Lehigh is a leading North American producer of **gray and white portland and specialty cements, aggregates and other construction materials.***

We have served the industry with unsurpassed quality and attention to customer needs since 1897.

LEHIGH CEMENT COMPANY

Evansville Plant
537 Evansville Road Fleetwood, PA 19522
(610) 926-1024
www.lehighcement.com

Exact Match Masonry Staining

TOLL FREE : 877-41-MATCH MASONRYSTAINING.COM

Custom Colors & Formula Created On Site & Custom Applications.
Reliable Exact Match Expertise, Results Guaranteed.

Brick, Block/CMUs, Mortar, Concrete, Pavers, Natural & Manufactured Stone
Dye lot differences, efflorescence, acid burns, discount/unavail. masonry, matching additions, custom requests, mortar mismatch, masonry renewal

AN EXACT MATCH FOR AMERICA'S MASONRY 30 YEAR WARRANTY

WHAT HAS MACS DONE FOR US LATELY?

The Building Code development process is complex to say the least. The players in the process are virtually everyone with an interest in any particular code issue which creates a politically charged environment. Code development is driven primarily by public safety and market share - protecting current markets and expanding new practices and products.

The Masonry Alliance for Codes and Standards is a member-based coalition of masonry organizations representing national, state, and regional producer associations, material suppliers, mason contractor organizations, and organized labor promotional groups that advocates for the masonry industry at the International Code Council Hearings. PCMA is a member of MACS to not only provide our input in the process but also to gain advanced knowledge of issues that can influence our local market.

The members of MACS forge consensus on masonry codes and standards issues, monitor and influence masonry

codes and standards, exchange information and Identify research/analysis needs. This happens through the following committee structure: Fire Safety, Energy, Fireplace and chimneys, Sustainability and 'green' initiatives, Structural analysis and design, Residential and commercial applications and veneer assemblies.

WHAT IS NEW FOR THE 2009 CYCLE OF CODES THAT ARE POISED TO BE ADOPTED BY THE PA DEPARTMENT OF LABOR AND INDUSTRY? THE FOLLOWING IS A SAMPLING OF THE CHANGES THAT WILL AFFECT THE MASONRY INDUSTRY.

- The 2008 MSJC document now titled TMS402/ACI530/ASCE5 will be the referenced standard in the 2009 edition of the International Building Code. This makes it easier to find the detail for design and construction of masonry structures.
- Residential Fire Sprinklers are required in townhouses immediately and in single family housing by Jan. 1, 2011.
- "Terrorism" Resistance with new requirements for enhanced structural integrity; durability, impact resistance, fire protection and hardening.
- Monitored Smoke Alarms which is not particularly masonry-related, except that monitoring is not required when the building is compartmentalized using fire barriers - a masonry wall.
- Shaft Enclosures will have a minimum 2 hour rating for 4 or more stories, including the basement.

2009 International Codes were recently published and efforts are already underway to begin proposing modifications to the 2012 I-Codes. It is a never ending process and we must keep ever vigilant to protect our market.

Note: This information was provided by Jason Thompson, President of MACS at the PCMA Convention Education Session.

ABC 27 EXTREME HOME MAKEOVER IN HARRISBURG AREA

PCMA members participated in the ABC 27 Extreme Home Makeover May 1 - 8 by providing donations of materials and masons to help with the project. Several secondary school masonry instructors and their students provided their services for labor and York Building Products supplied and block and supplies for the basement wall.

Rinox Pavers supplied materials and labor for a sidewalk on the property. We thank these members for their efforts to help a very needy family in the Harrisburg area. This was a good public relations effort to showcase masonry products and masons in this regional effort.



Bret Meadows
TRUCK EQUIPMENT SALES
bmeadows@fallsway.com

1 - 8 0 0 - 4 5 8 - 7 9 4 1
330-633-6000 ■ FAX 330-633-0834
www.fallsway.com
1277 DeValera Ave., P.O. Box 4537, Akron, Ohio 44310-0537



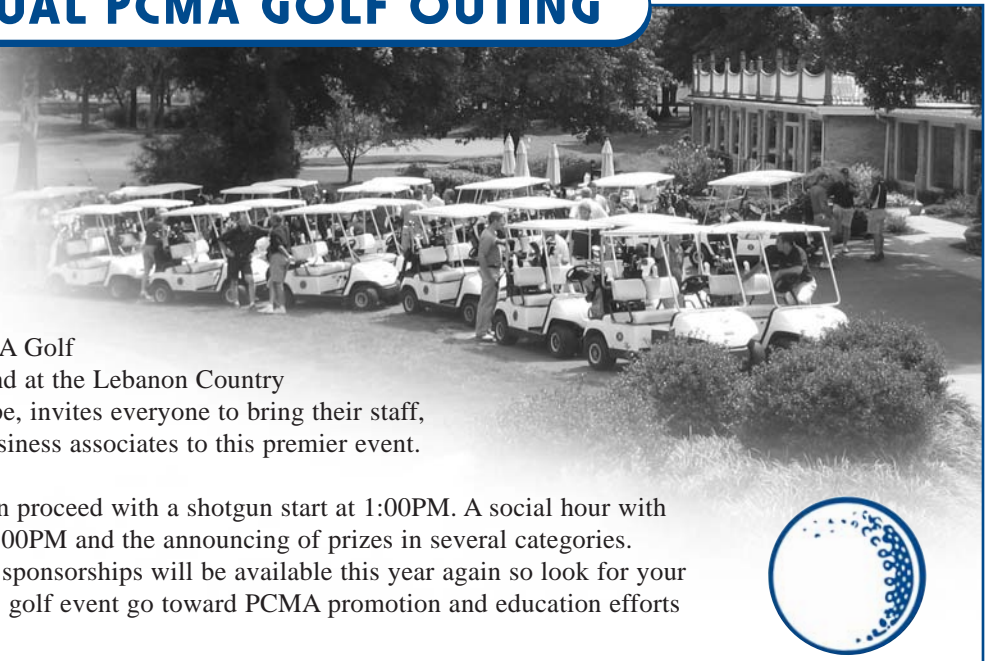
FEDERAL WHITE CEMENT

When your needs require a whiter and brighter look, think FEDERAL WHITE CEMENT for a time tested consistent product.

Available in both portland and masonry cements.
For more information contact:
800-265-1806
fax 519-485-5892

ANNUAL PCMA GOLF OUTING

MARK YOUR CALENDARS NOW! WEDNESDAY, AUGUST 26



Wednesday, August 26 is the Annual PCMA Golf Outing to be held again my popular demand at the Lebanon Country Club in Lebanon, PA. Chairman, Paul Pepe, invites everyone to bring their staff, architects, engineers, masons and other business associates to this premier event.

We will begin at 11:30 AM with lunch then proceed with a shotgun start at 1:00PM. A social hour with drinks and hors d'oeuvres will follow at 6:00PM and the announcing of prizes in several categories. Sponsorship opportunities, as well as hole sponsorships will be available this year again so look for your invitations to arrive. All proceeds from the golf event go toward PCMA promotion and education efforts to benefit all member companies.



Karen Hefner
Territory Manager

Lafarge Mid-Atlantic Inc.
300 E. Joppa Road, Suite 200, Towson, Maryland 21286
Office: 410-683-9250 Fax: 410-683-9297
Cell: 443-829-6685
Karen.Hefner@Lafarge-na.com
www.lafargenorthamerica.com



MATT BILLITER
Technical Sales Representative

LANXESS Corporation
111 RIDC Park West Drive
Pittsburgh, PA 15275-1112 Phone:
412 809-4704
Fax: 412 809-1134
Mobile: 412 260-0146
Customer Service: 1-800-LANXESS
(526-9377)
matthew.billiter@lanxess.com



*Full Line Supplier Of
Concrete Masonry & Hardscaping
Hand Tools*

Distributor For PL Adhesives



*Call Office For Details & A Copy Of Our
Full Line Hand Tool Catalog
1-800-243-1459*

Sales To Dealers Only!!



A WHOLE NEW WORLD OF COLOR

Add attractive color **AND** economic value to your concrete applications.

- Architectural block
- Pavers and patio pavers
- Ready mix applications
- Mortar color
- Roof tile
- Stucco

Solomon Colors offers you:

- More standard pre-blended dry and liquid colors **in stock** and ready for immediate shipment than any other U.S. supplier
- Specialization in custom blending **and** color matching
- Valuable laboratory and **on-site assistance**
- Personal service and fast turnaround time



IRON OXIDE PIGMENTS FOR THE CONCRETE INDUSTRY

(610) 719-8622

miannelli@solomoncolors.com

Ask for Mike Iannelli

4TH ANNUAL MASONRY INSTRUCTORS WORKSHOP

The annual Workshop will be held September 21, 2009. This very successful workshop is attended by 75% of the masonry instructors at the secondary and post secondary level. We were able to get sponsorship again from the PA Department of Education who will provide Act 48 credits for the 8 hours the instructors will attend the event.



ON THE AGENDA FOR THE DAY IS:

- *Standardization of Masonry Programs*
- *NOCTI Competency Tests Update*
- *Proper Installation Practices by Bryan Light, BIA Southeast Region*
- *Small Group Breakout Sessions:*
 - ~ *Training to Judge Masonry Competitions*
 - ~ *Masonry Fireplaces, Chimney Construction*
 - ~ *Restoration*
- *Masonry Instructors Association of PA Meeting*

Interest is already high from the instructors who have responded thus far. We thank the *PCA Northeast Cement Shippers Association* who are again sponsoring this event with us.

**Build it Right
with Lehigh White!**

**LEHIGHTM
WHITE CEMENT**

**Lehigh Cement Company
White Cement Division**

7660 Imperial Way • Allentown, PA 18195
Phone: 800-961-5932 • Fax: 610-366-4888
Email: infonorth@lehighwhitecement.com
www.lehighwhitecement.com

Nitterhouse
masonry products, LLC

Architectural Block, Nicrote Brick,
Retaining walls, Patio walls, Paving stones,
Interlocking Pavers

859 Cleveland Ave. Chambersburg, PA 17201
717-267-4500 www.nitterhouse.com

Every structure is a monument to its creator.

That's why you use the finest materials. In masonry, that means genuine cement-lime mortar for dependable bond strength, reduced water penetration and ageless durability. And one family of mason's lime products stands above the rest . . . Graymont, made from dolomitic limestone said to be one of the purest in the world.

*Super Limoid[®] Mason's Lime
Niagara[®] Mature Lime Putty*

Graymont Dolime (OH) Inc.
PO Box 158, Genoa, OH 43430
Tel. 800.537.4489 • Fax 419.855.4602
www.graymont-oh.com



GRAYMONT

Grace Products for Peak Performance

Grace admixtures help
control efflorescence,
enhance color, improve durability
and increase overall quality

CONTACT:

Bill McHugh
(678) 546-3182

GRACE
Construction Products
www.graceconstruction.com

CODE BOOKS

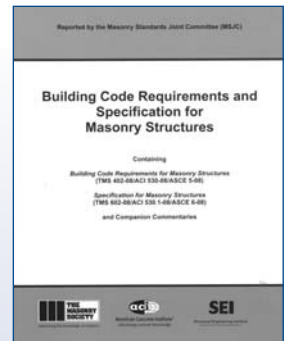
The International Code Council recently completed the incorporation of revisions to the 2009 editions of Building Codes, which includes the IBC for commercial and IRC for residential construction. These Codes will be in effect for three years beginning January 2009 in many areas of the USA. In Pennsylvania, they will take effect after adoption by the State by the end of 2009.

These new Codes will reference the 2008 edition of the Masonry Standards Joint Committee (MSJC) Code and Specification (2008 TMS 402/ACI 530/ASCE 5 and TMS 602/ACI 530.1/ASCE 6) hereby known as TMS402 (Code) and TMS 602 (Specification).

This national masonry standard includes the latest design and construction requirements for masonry, including updates to structural design requirements, clarified and reorganized seismic detailing provisions, and updated construction practices, including the use of self-consolidating grout.

As part of the series of changes incorporated into the 2009 IBC provisions, the masonry design and construction requirements have been significantly streamlined through the removal of redundant and confusing requirements.

If you should require a copy of the TMS 402/TMS 602 documents or the International Building Code Books, please contact the PCMA office. We will be purchasing these in bulk in order to provide price breaks for our members.



MASONRY TIP POSTCARD

The most recent PCMA produced **Masonry Tip Postcard** was sent to all of the AIA Architects and the Structural Engineers in PA addressing the issue of the Concrete Masonry and Thermal Mass. A copy of this card is on our website and a quantity is available for sale to the PCMA members. Contact the office if you are interested in purchasing some for your company.



SEE IT **BEFORE** YOU BUILD IT!

Build your home with curb appeal. Plan your brick home's exterior color scheme **ONLINE!** Use our ColorBuilder tool available at www.COLORPLAN.com

Crafted Exclusively By **Flamenco BRIXMENT**

Color Masonry Cements and Color Portland & Lime Blends

Another Customer Service Of **Essroc** Italcementi Group

Northeast Customer Service 1-800-4-ESSROC Midwest Customer Service 1-800-2-ESSROC

Reinforce With Confidence!

Jon Calle
Western PA
(610) 942-0500

Craig Bell
Eastern PA
(917) 734-7985

PA Location Now stocking:

- Stratagrid®
- Sleeve-It™

STRATA
SYSTEMS, INC.

advanced soil reinforcement products

www.geogrid.com

NOCTI CUT SCORE PROJECT

The masonry instructors at the secondary level in PA expressed concern about the raising of the cut scores for the NOCTI test which determine if a student passes the course. **John Koenigsberg, Indiana County Career & Tech Center**, was the instructor who brought this issue, that the brick and block tests scores were recently revised to make them too high for most of the students to pass and get a certificate, to the forefront and the attention of the PA Department of Education. Executive Director, Jan Boyer worked with the PA Dept. of Education through a consultant from NOCTI to review the test and the appropriate cut scores. Three meetings were set up in March with participation from instructors, masons and industry to review the test.

In late April, just in time for the final testing for end of school year 2008 - 2009, the results showed that the cut scores should be reduced 30 points beginning immediately. This reduction will make a positive impact on the students and the masonry programs.

The NOCTI Consultant, Rae Lees, sent a complimentary note about how accommodating and wonderful to work with our masonry group of instructors, masons and industry representatives were on this project - a good testament to our great industry. This project will now go to the national level to get accurate cuts scores for others throughout the US as well.

PAFSCAC UPDATE



A meeting was held in the Harrisburg on April 22 at the office of Representative Mauree Gingrich (Republican) with Representative Kevin Murphy (Democrat) and our PA Fire Safe Construction Advisory Council to begin the legislative process to introduce the Bill to require fire safe construction with non-combustible compartment walls floors and ceilings in multi-residential construction. The meeting went really well and both Representatives agreed to sponsor the Bill. We provided recommended Code language and they are drafting the Bill from this information for our review. We are excited that we are finally moving forward and hope to gain back this marketshare very soon!



**BUILD IT STRONGER. FASTER.
BEAUTIFULLY. SMARTER.
GREENER. SAFER. FOREVER.**

For 100 years, the people of CEMEX have been hard at work turning visions into realities. Building what could only be imagined, improving upon convention and believing that partnership and passion are the only ways to do business.

We invite you to learn more about our products and services, including Brikset and Richcolor®, for both residential and commercial construction by visiting www.cemexusa.com, or by contacting your local CEMEX office:

Wampum Sales 800-942-8078

Excell Cement Technologies

...the science of cement



The demands of modern architectural requirements push the envelope of innovative solutions for beauty, strength, and durability in concrete masonry.

Excell Enhanced Cement provides concrete block and paver manufacturers with a unique, cost effective product engineered to meet this demand.

Excell Cement Technologies

TOTAL SOLUTIONS

- **EXL CP – Reduces efflorescence**
- **EXL HPC – Virtually eliminates efflorescence**
- **Enhances color fastness**
- **Increases production rates**
- **Improves your bottom line**

Call 800-850-0527 for a *Total Solutions* demonstration in your plant.

www.excellcement.com



2009 SKILLS USA

The Masonry Instructors Association of PA (MIAP), which runs as a committee of PCMA, took over the coordination of the *PA Skills USA masonry competition* to be held April 1 and 2 at the Lebanon EXPO Center.

← **Josh Boettner**, instructor at the *Lebanon Career & Tech Center* was in charge of the competition.

ELECTRONIC NEWSLETTER

The PCMA Newsletter will be provided in printed form as well as emailed in PDF for our Members in 2009. Please contact the office if you have a specific preference.

PATHFINDER SYSTEMS

Travis Hilldore
Sales

695 Ottawa Beach Road
Holland, MI 49424
Phone (616) 395-8447
Fax (616) 395-5995
Toll-Free 877-49Tiger (84437)
Cell (616) 403-7174
Email: travis@pathfindersystem.com

Let Your Logo Sizzle!

Bon® has a wide selection of products available for private labeling. This is an effective and inexpensive way to keep your name in front of your customers and promote your company.

**Call today for a free catalog
of promo items available
with your logo!**

Bon Tool Co.
4430 Gibsonia Rd.
Gibsonia, PA 15044
www.bontool.com
800-444-7060

BonFire™
Ignite your sales!

Construction

James Preskenis

District Manager



Sika Corporation
150 Ben Fairless Drive
Fairless Hills, PA 19030

Tel: 215 295 6600
Cell: 302 218 4987
Fax: 302 492 8752
preskenis.james@sika-corp.com

A Tradition of Excellence...



**Manufacturing
Quality Cements
Since 1928**

KEYSTONE CEMENT COMPANY

557 West Uwchlan Avenue
Suite 230
Exton, PA 19341

(610) 903-0383
(800) 523-5442
Fax (610) 903-0388

*Portland Types I & III
Masonry N · S · M
Color Cements*

A Division of Giant Cement Holding Inc.



August

5-8 NCMA Mid Year Meeting
Chicago, Illinois

26 **Annual PCMA Golf Outing**
Lebanon, Country Club, Lebanon, PA

September

21 4th Annual Masonry Instructors Workshop
Harrisburg, PA

October

15-20 The Masonry Society Annual Meeting
Evanston, Illinois

24-31 ICC Code Development Hearings
Baltimore, Maryland

November

1-4 ICC Annual Conference & Expo

5 **NCMA SRW Installer Training**
State College, PA

11-14 USGBC Greenbuild International
Conference & Expo
Phoenix, Arizona

December

2 **PCMA Annual Holiday
General Membership Meeting**
Lebanon, PA

6-10 ASTM Meetings
Atlanta, Georgia

March 2010

16-20 NCMA Convention
San Antonio, Texas

May 2010

11-15 The Masonry Society Spring Meeting
Orlando, Florida

June 2010

18-20 PCMA Annual Convention
Woodloch Resort

** This schedule does not include committee meetings. If you wish to know about these meetings, contact Jan at the PCMA office (717) 279-6346.*

www.pacma.com

Concrete Masonry – Diverse Sustainable Solutions

Return Service Requested

Pennsylvania Concrete Masonry Association
P.O. Box 4
813 Chestnut Street
Lebanon, PA 17042-0004

